



California Firefighter Summer Games

MTB Trail Race

June 22, 2026 | Newport Beach, CA

Proudly Hosted by the Newport Beach Firefighter Association

On behalf of the Newport Beach Firefighter's Association (NBFA) through the California Firemen's Athletic Association (CFAA) is hosting the MTB Trail Race at Crystal Cove State Park during the 2026 California Firefighter Summer Games in Newport Beach June 21-26, 2026.

This location has been identified as the most ideal venue for the event, not only for its central accessibility but also for the remarkable features it offers: natural beauty, technical terrain, and panoramic views of the Pacific Ocean. These elements will provide a challenging, scenic, and memorable experience for participants while showcasing the park's unique environment.

The race will start and finish at lower Morrow Parking. The event will feature a mass start with plenty of passing areas to sort riders out on the 15k loop. We are offering a Pro 30k race option (2 lap/18.6 mile) and a Sport Class (1 lap/9.3mile). Trails include Fence Line, Missing Link, Ticketron, Morro Ridge, and No Name. Trails are wide with 20% single track easy to intermediate in difficulty. **No E-bikes allowed in the park.** Entrance/parking fee is not included in registration fee. First 20 cars attending the event are free. \$15 daily park entrance fee is paid to directly to the park upon entering in through the gate. Annual California State Park pass will work as well.

We will be awarding medals 1-3 in both the Sport and Pro Divisions.

Together, we are dedicated to hosting an event that honors both the firefighting community and the natural resources of our state.

Your event leads:

Javier Gonzalez 661-992-4833

Matt Skelly

SCHEDULE OF EVENTS

SUNDAY, JUNE 21

17:00 pm – 1900 pm

Racer Check-in and packet pick up. Poolside music and beer at the host hotel

MONDAY, JUNE 22

RACE VENUE: Crystal Cove State Park

Insert sponsor and event stuff here.

6:00 am - Park opens

6:00 am -7:30am: **Last chance emergency late check in at Host Hotel**

SCHEDULE: MTB

7:45 am – Racer line up begins (you will be called to the line by the color sticker on your plate)

7:50 am – Pro Call Ups

7:55 am – National Anthem and last-minute announcements

8:00 am – 1st start wave – All Pros (2 Lap)

8:15 am – All SPORT Groups (1 Lap) Self-Sort: Fastest racers up front fading to slower riders in the back.

11:30 am – Awards begin

IMPORTANT INFORMATION AND RULES:

- You must have your ID to pick up at Check-In and every racer must pick up their own packet and sign the event waiver, either online or at Check-In.
- This is **not a closed course**. Always be aware of hikers and bikers on the course and follow right of way on descents.
- DO NOT enter the start corral until your group or color is called up.
- Race will start promptly at 8:00 am after the National Anthem.
- All age groups and race categories will have started by 8:05 am.
- You must have your race plate attached on your bike during the entire race.
- Helmets must be worn when on the bike with chinstraps buckled.
- Unsportsmanlike conduct, swearing, and littering are grounds for disqualification.

- No earphones! It is unsafe if you cannot hear a rider verbally attempting to pass you.
- Be safe and courteous when passing another racer.
- Please DO NOT intentionally litter and pick up your trash.
- Do not leave clothing or trash on the course or thrown in surrounding areas.
- If you do not finish, please inform the Timer or Race Director at the Finish Area to ensure you are accounted for. Look for a “Race Crew” person with a fire shirt.

RACE PLATES:

Race plates must be visible and attached to the handlebars of your bike. Please do not cut or fold your plate, as this could damage the timing chip and result in not capturing your race time.

COURSE CUT OFFS”

If you sign up for Sport Category, you will be competing in the 15k race. You will be required to complete that 1-lap course by 10 pm.

If you are racing in the 2-lap 30k race, you must complete your second lap by 11:30 am. If you have not finished your first lap by 10:00 am, we reserve the right to stop you and issue a DNF.

Course map

The race takes place entirely in the Crystal Cove State Park. Park is open to the public and features various terrain, challenging climbs, ocean views, and a few sections of single track. It starts near sea level and climbs to 1000 ft. The first section is wide and steady climb to the top of Moro Ridge. The climb continues along Upper Moro campground to the Missing Link single track. Trail continues to single track Fenceline and then heads down Red Tail Ridge Rd to some more single track called Ticketron. Finally, No Name Trail to No Dogs back to Lower Moro parking to the finish. If you are doing the 30k you will begin the loop again near the start of the race.

Aid Station

There will be one aid station near the end of Fenceline Single track. Water and electrolyte replacement with trail-mix and bananas for consumption. Trash cans will be available and you will be DQ if you are spotted littering on the course.

Course Signage

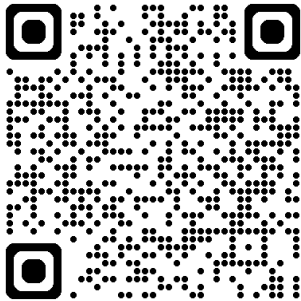
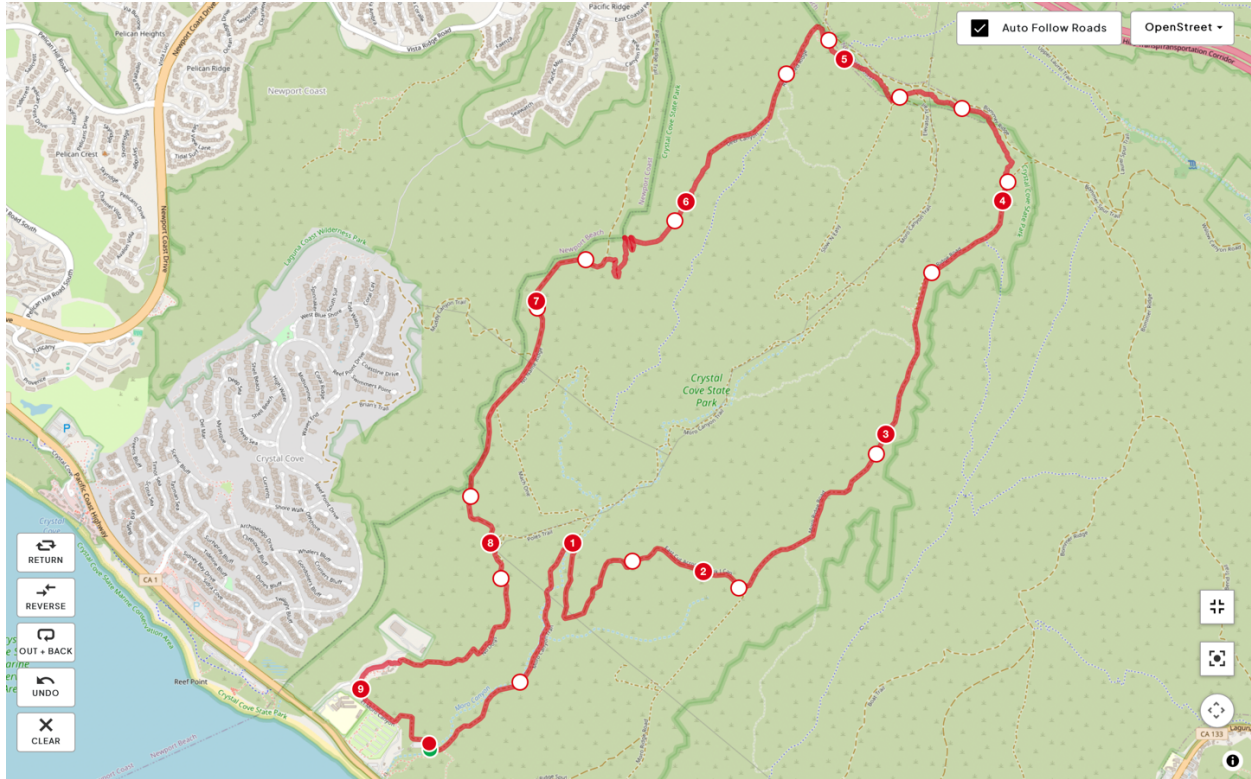
The course will be clearly marked at every crucial turn and crossing, with nearly 40 signs and course markings. Look for these important signs:



Support and Medical

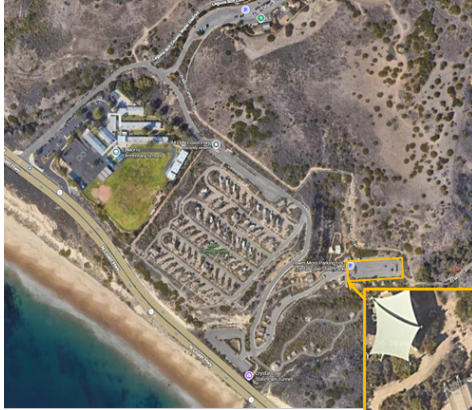
- All support stations will be on course by the Start and designated with signage.
- Newport Beach Pop Up – Water Station, Electrolyte replacement.
- Newport Beach Fire – FIRST AID – At top near Bommer Canyon and at Moro Parking
- Tech Area Inspection and Repair – Located at Moro Parking.

Best of luck to all racers



QR for Mapmyride [Summer Games MTB 2026 - MapMyRide](#)

Parking and event location.



We will block off this portion of the parking lot for your event. Roadways will need to be kept clear. This area will be your determination for use. If you want a to block an area for repairs or gathering like you said or want to allow participants to park in along with your volunteers. We can finalize that at a later date.

Recommended start/finish area with EZ-UP.